

228000

229000

230000

231000

232000

233000

234000



Dott. Agr. Paolo Viola, PhD
Tecnico Faunistico Ambientale



Paolo Viola

Zona n° 6, sottozone a; b; d



Canino

6b
12 ha

6d
118,1 ha

Tuscania

Montalto di Castro

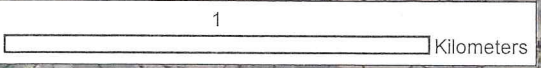
6a
77,1 ha



25/08/23



Paolo Viola



CGS ED50 UTM 34N

4698000

4697000

4696000

4695000

4698000

4697000

4696000

4695000

228000

229000

230000

231000

232000

233000

234000

233000

234000

235000

236000

237000



Zona n° 7, sottozone a; b

Dott. Agr. Paolo Viola, PhD
Tecnico Faunistico Ambientale



Paolo Viola

Canino

Arlena di Castro

Tuscania

7a

91 ha

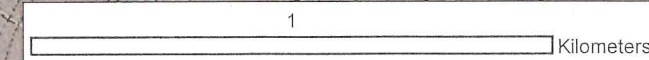
7b

26,9 ha

25/09/23



[Signature]



CGS ED50 UTM 33N

233000

234000

235000

236000

237000

4702000

4701000

4700000

4699000

4702000

4701000

4700000

4699000



Zona n° 7, sottozona c

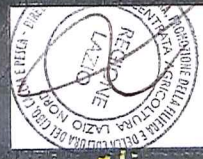
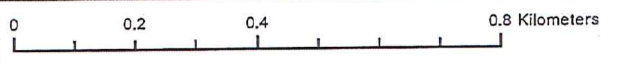
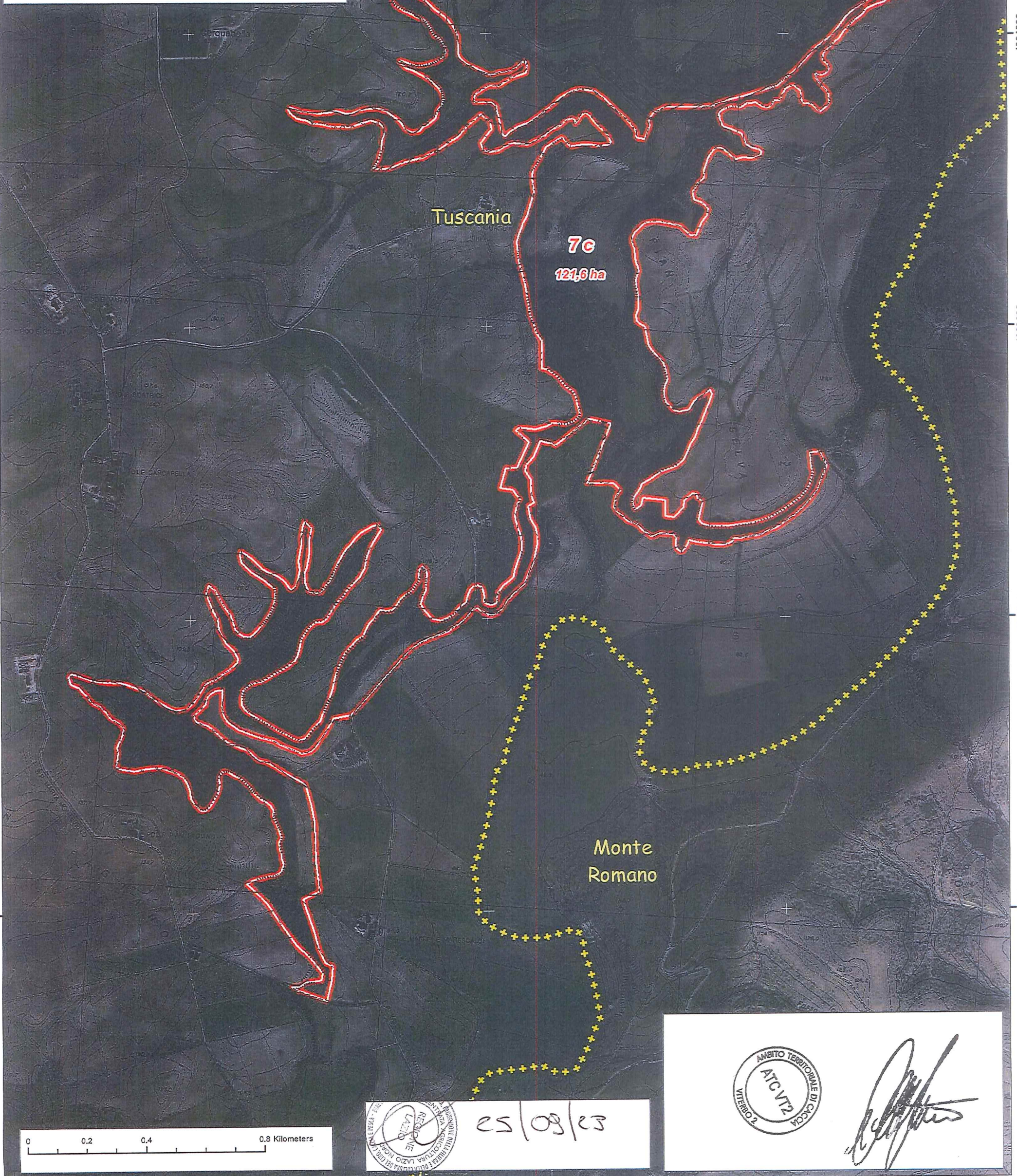


Tecnici incaricati:
Dott. Paolo Viola - Tecnico faunistico
Dott. Agr. Riccardo Primi

Viola Paolo



Primi Riccardo



25/09/23

AMBITO TERRITORIALE DI CACCIA
ATC VT2
VITERBO 2

Primi Riccardo

Zona n° 7bis, sottozone a; b

Tecnici incaricati:
Dott. Paolo Viola - Tecnico faunistico
Dott. Agr. Riccardo Primi

Paolo Viola



Riccardo Primi



Viterbo

Tuscania

7bis a
41 ha

Monte Romano

7bis b
347 ha

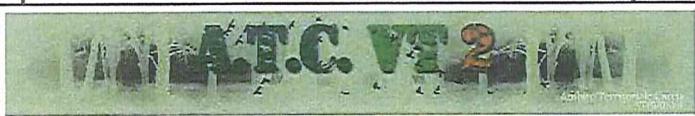
0 0.2 0.4 0.8 Kilometers



25/09/23



[Signature]



Zona n° 7bis, sottozona c

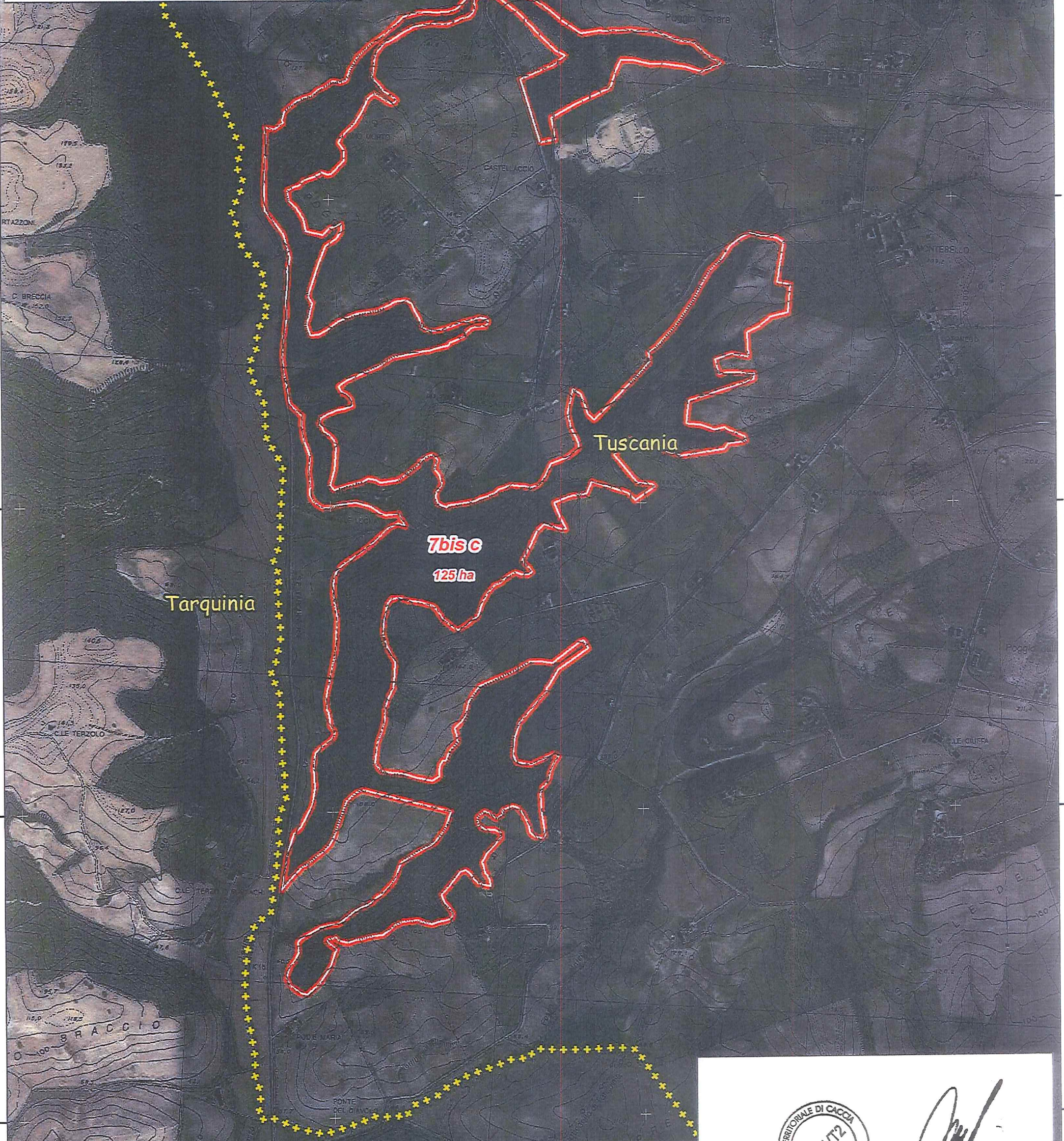


Tecnici incaricati:
Dott. Paolo Viola - Tecnico faunistico
Dott. Agr. Riccardo Primi

Viola Paolo



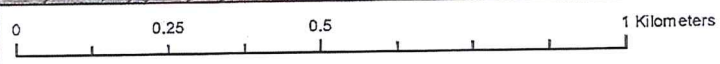
Primi Riccardo



7bis
125 ha

Tarquinia

Tuscania



25/09/23



[Signature]